



Main Line Health[®]

Proposed Downingtown Health Center

November 2024



Main Line Health®

Agenda

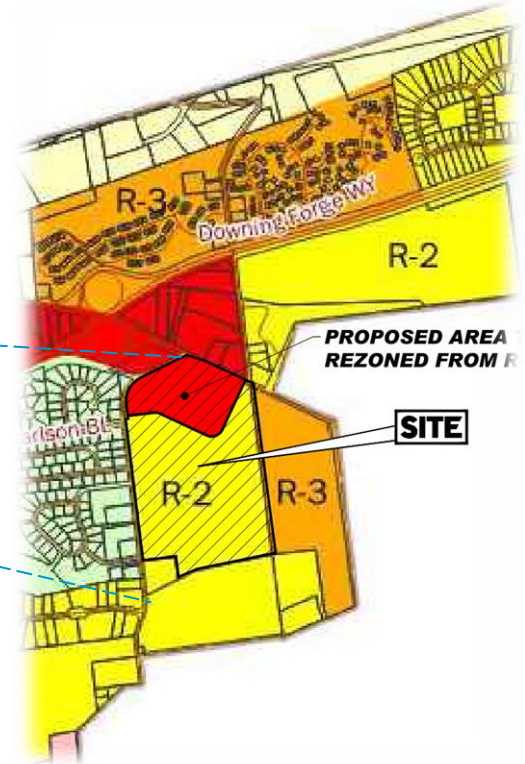
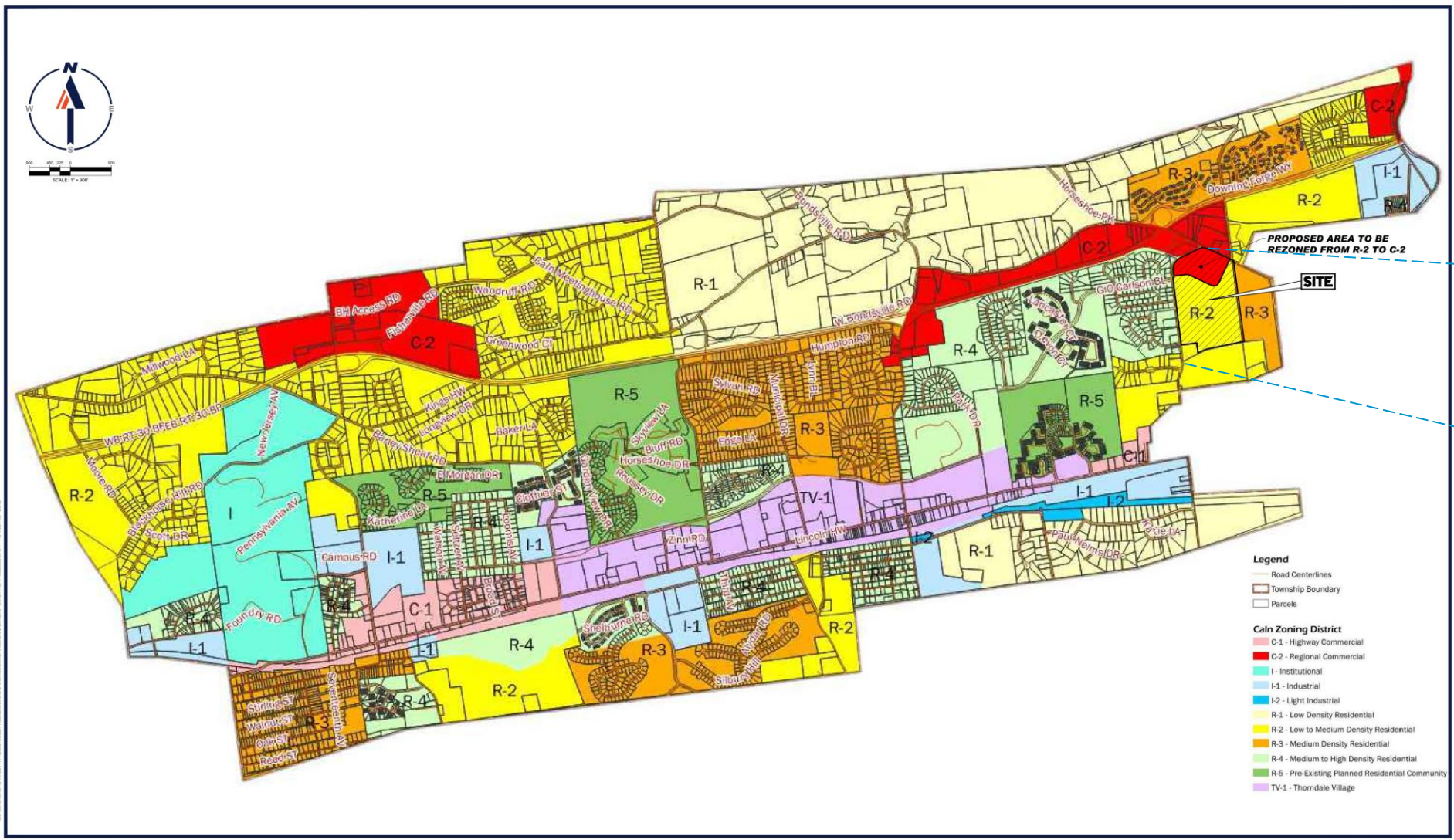
- Current Submission
 - Subdivision and Land Development
 - Zoning
- Proposed Site Plan
- Proposed Building
- Included Services



Current Submission

Development of a portion of the parcel at Manor and Lloyd Ave.

R-2 to C-2 Zoning





Primary Care & Urgent Care



Medical Specialties

- Cardiology
- Oncology
- Obstetrics & Gynecology
- Neurology
- Endocrinology
- Rheumatology



Surgical Specialties

- Vascular Surgery
- Pain Management
- Otolaryngology (ENT)
- Gastroenterology
- Colorectal Surgery
- General Surgery
- Surgical Oncology
- Neurosurgery
- Orthopedic Surgery

Hospital Based Services



X-Ray



MRI



CT & PET-CT



US



Mammo



Infusion



Radiation Oncology



ASC

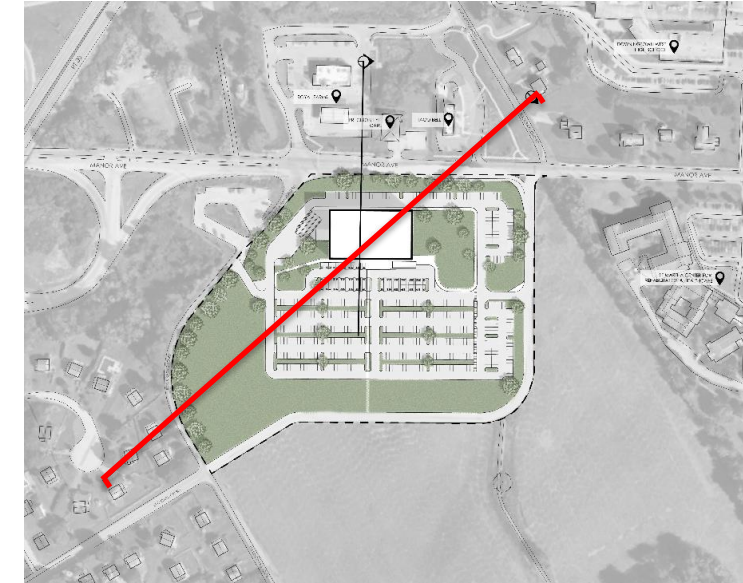
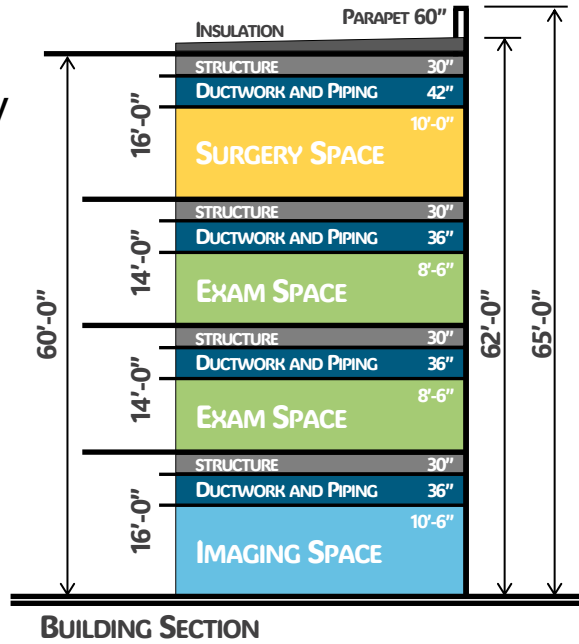
Ophthalmology
Orthopedics
Spine
Pain
General Surgery
ENT
Urology
Digestive Health



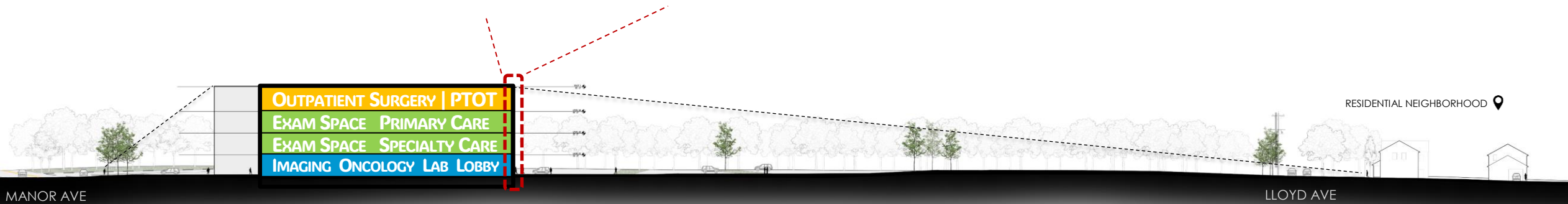
Rehab

Why 4 stories?

- Improved energy efficiency
- Less piped storm drainage from roof
- More greenspace on site
- Improved patient movement
- Improved exam floor flow



SITE KEY PLAN



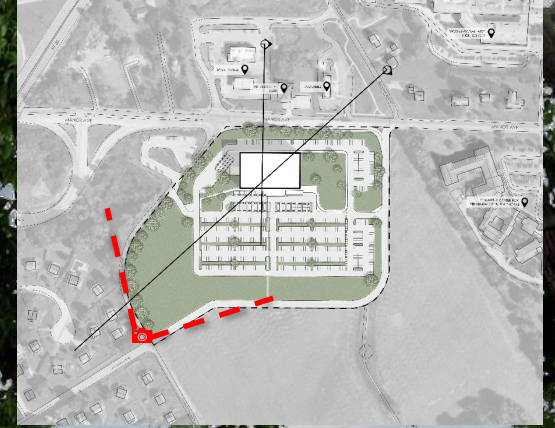
LLOYD AVE SECTION

New

Opportunity for new site improvement introduced to residents on 11.11.2024

To be developed and incorporated into the future design submissions

Not included in the previously submitted site plan



VIEW FROM THE NEIGHBORHOOD



Main Line Health[®]

Questions?

Lankenau Medical Center | Bryn Mawr Hospital | Paoli Hospital | Riddle Hospital | Bryn Mawr Rehab Hospital
Mirmont Treatment Center | HomeCare & Hospice | Lankenau Institute for Medical Research